

MILCOR®

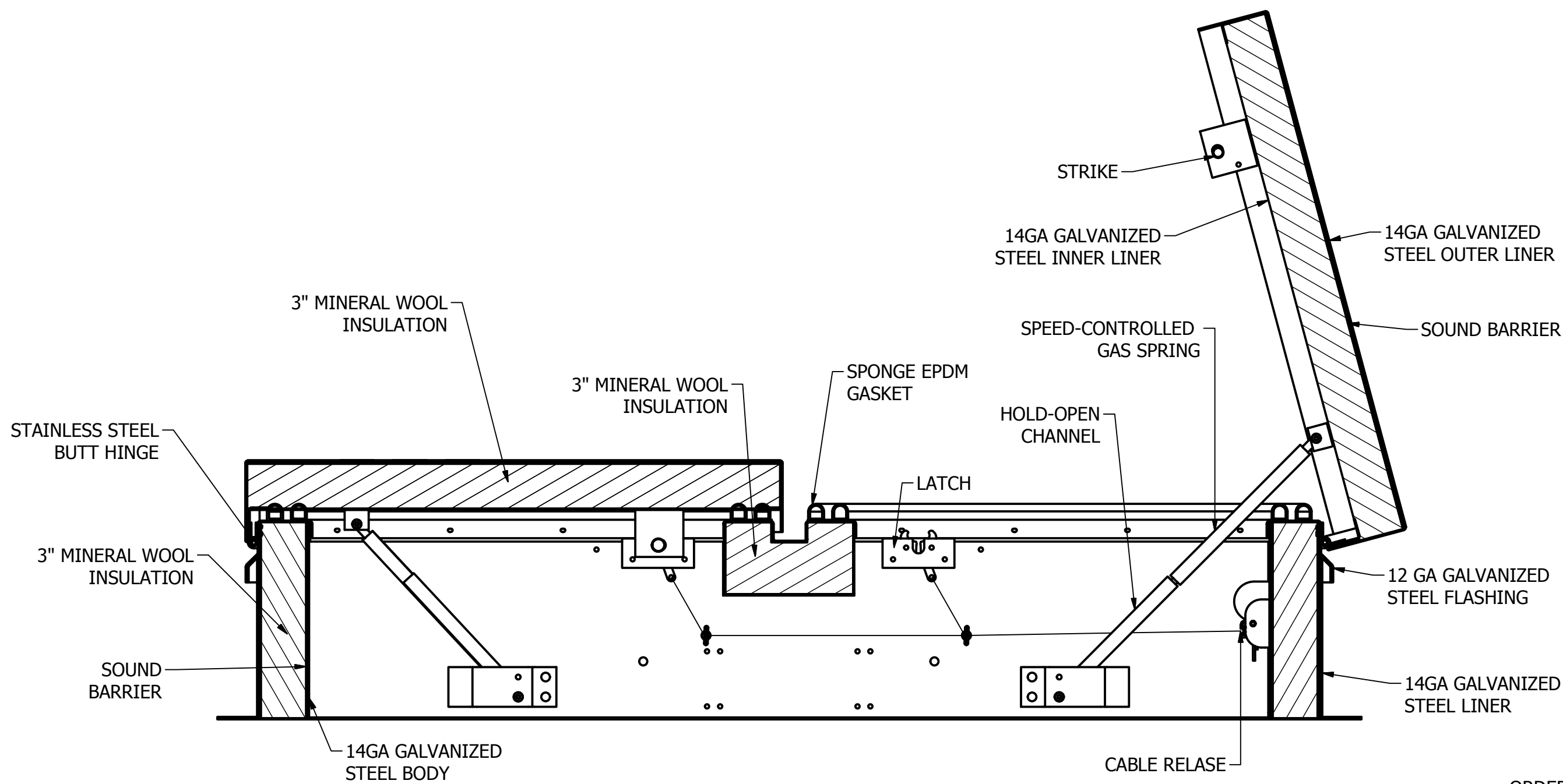
LEED for NEW CONSTRUCTION Version 2.2



						Milcor Galv Steel Roof Hatches	Milcor Alum Roof Hatches	Milcor Skylight Hatches	Milcor Galv Stl Heat & Smoke Vents	Milcor Alum Heat & Smoke Vents	Milcor Domed Heat & Smoke Vents	Milcor Translucent Panel Heat & Smoke Vents	Milcor Steel Sidewalk Doors	Milcor Alum Sidewalk Doors	Milcor Steel Floor Doors	Milcor Alum Floor Doors	Milcor Steel Access Doors
SS	WE	EA	MR	EQ	ID	Heat Island Effect, Roof	X	X	X	X	X	X	X	X	X	X	X
Credit 7.2																	
SS	WE	EA	MR	EQ	ID	Recycled Content, 10% (post-consumer + 1/2 pre-consumer)	X	X	X	X	X	X	X	X	X	X	X
Credit 4.1																	
SS	WE	EA	MR	EQ	ID	Recycled Content, 20% (post-consumer + 1/2 pre-consumer)	X	X	X	X	X	X	X	X	X	X	X
Credit 4.2																	
SS	WE	EA	MR	EQ	ID	Regional Materials, 10% Extracted, Processed & Manufactured	X	X	X	X	X	X	X	X	X	X	X
Credit 5.1																	
SS	WE	EA	MR	EQ	ID	Regional Materials, 20% Extracted, Processed & Manufactured	X	X	X	X	X	X	X	X	X	X	X
Credit 5.2																	
SS	WE	EA	MR	EQ	ID	Low-Emitting Materials, Adhesives & Sealants	X	X	X	X	X	X	X	X	X	X	X
Credit 4.1																	
SS	WE	EA	MR	EQ	ID	Low-Emitting Materials, Paints & Coatings	X	X	X	X	X	X	X	X	X	X	X
Credit 4.2																	

For more information, contact
Access Doors and Panels
www.accessdoorsandpanels.com

Phone: 1-800-609-2917
Fax: 1-888-828-6021
Email info@accessdoorsandpanels.com



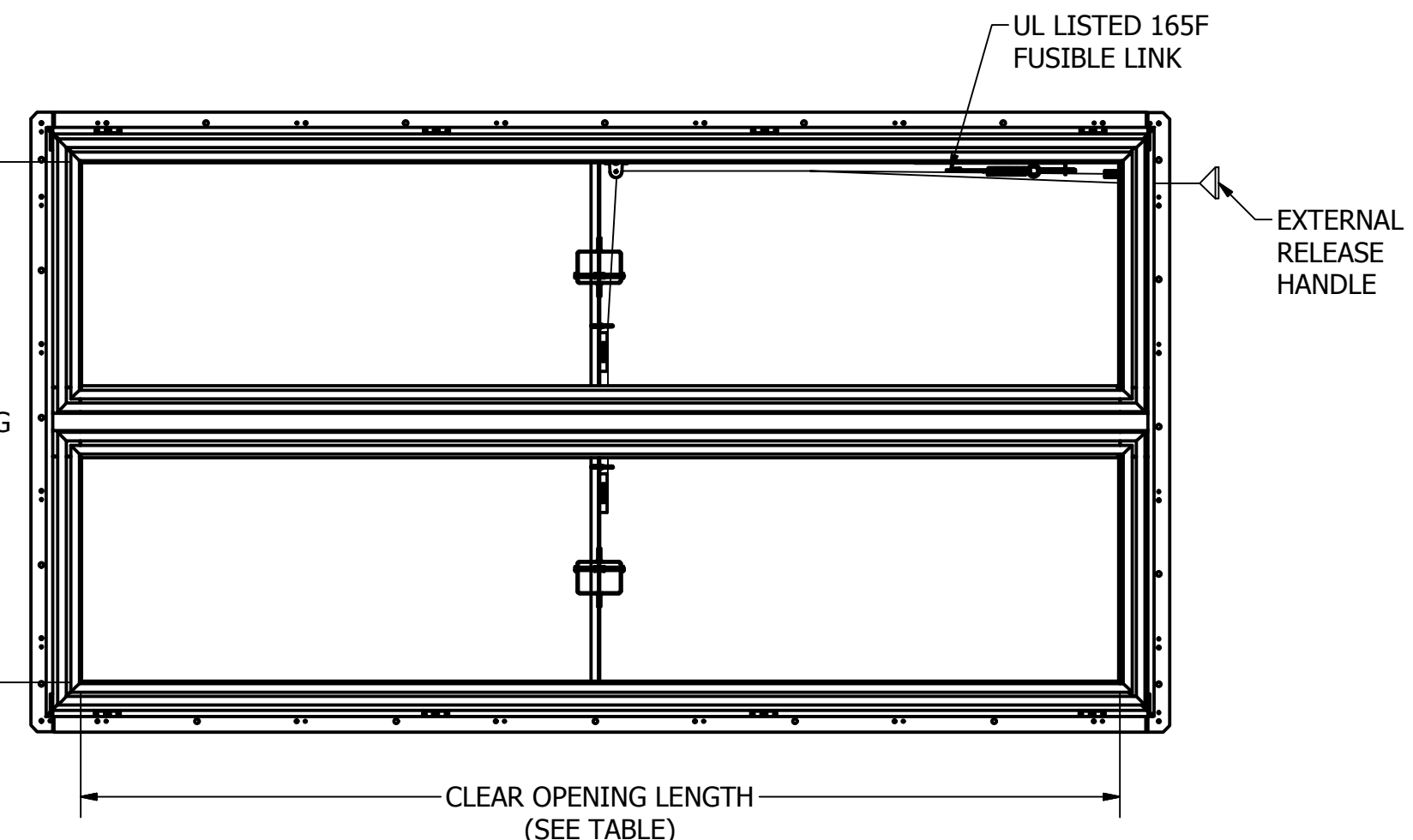
ORDER WILL NOT BE RELEASED FOR FABRICATION UNTIL SIGNED COPY IS RECEIVED

VERIFICATION AND APPROVAL OF GENERAL ARRANGEMENT AND OVERALL DIMENSIONS OF THIS DOCUMENT ARE REQUIRED BEFORE THE ORDER IS ENTERED FOR MANUFACTURING.

APPROVAL SIGNATURE: _____

TITLE HELD: _____

DATE OF APPROVAL: _____



STANDARD MODEL TABLE			
MODEL NUMBER	INSIDE CURB DIM. WIDTH X LENGTH	QTY	UL
U-LP STC-50-4848	4' X 4'		✓
U-LP STC-50-4860	4' X 5'		✓
U-LP STC-50-4872	4' X 6'		✓
U-LP STC-50-4884	4' X 7'		✓
U-LP STC-50-4896	4' X 8'		✓
U-LP STC-50-6072	5' X 6'		✓
U-LP STC-50-6084	5' X 7'		✓
U-LP STC-50-6096	5' X 8'		✓
U-LP STC-50-60108	5' X 9'		✓
U-LP STC-50-60120	5' X 10'		✓
U-LP STC-50-60132	5' X 11'		✓
U-LP STC-50-60144	5' X 12'		✓
U-LP STC-50-6672	5'6\" X 6'		✓
U-LP STC-50-6684	5'6\" X 7'		✓
U-LP STC-50-6696	5'6\" X 8'		✓
U-LP STC-50-66108	5'6\" X 9'		✓
U-LP STC-50-66120	5'6\" X 10'		✓
U-LP STC-50-66132	5'6\" X 11'		✓
U-LP STC-50-66144	5'6\" X 12'		✓
U-LP STC-50-7272	6' X 6'		✓
U-LP STC-50-7284	6' X 7'		✓
U-LP STC-50-7296	6' X 8'		✓
U-LP STC-50-72108	6' X 9'		✓
U-LP STC-50-72120	6' X 10'		✓
U-LP STC-50-72132	6' X 11'		✓
U-LP STC-50-72144	6' X 12'		✓

NOTES:
 - LISTED BY UNDERWRITERS' LABORATORIES FOR CLASS 90 ROOF DECKS
 - MATERIALS RATED FOR STC 50
 - CURB WIDTHS X LENGTHS BETWEEN THE STANDARD LISTED SIZES ARE CUSTOM
 - CUSTOM SIZES BETWEEN 4'X4' AND 6'X12' ARE UL LISTED.

MILCOR

COMMERCIAL PRODUCTS GROUP
 5030 CORPORATE EXCHANGE BLVD.
 GRAND RAPIDS, MI 49512
 PH - 800 624 8642
 FAX - 866 466 9335

DEALER _____

PROJECT _____

LOCATION _____

ARCH. _____

DATE _____

DRAWN _____ JOB NO. _____